



ACCREDITATION EVIDENCE

Title: Western's Workforce Development Webpage

Evidence Type: Clear

Date: 21 January 2022

WAN: 22-0093

Classification: Website

PII: No

Redacted: No





Workforce Development

Western Wyoming Community College's Workforce Development Department is here to help mitigate the risks of industry through safety training. We believe in a proactive approach to training. We want our customers and students to know how to be safe when they walk out of our doors and into any field.

We offer our customers a variety of safety trainings, certifications, and awareness, through both hands on and classroom learning. We give our customers the opportunity to develop their own "new hire" training with us. Whether it is a week, 3 days, or less, we will train your employees with the safety modules that you have choosen so that you and your employees have the safety mindset before they head out to the field.

The Workforce Development Department will keep track of your safety training records and send you updates and reminders for recertification as needed.

Please contact our Workforce Development Department office at 307-872-1326 for more information on our available training modules and training schedules. Our dedicated instructors and staff members look forward to working with you to make your compnay stand out with a dedicated safety mindset for all of your employees.

Thank you for choosing us for all your training needs!

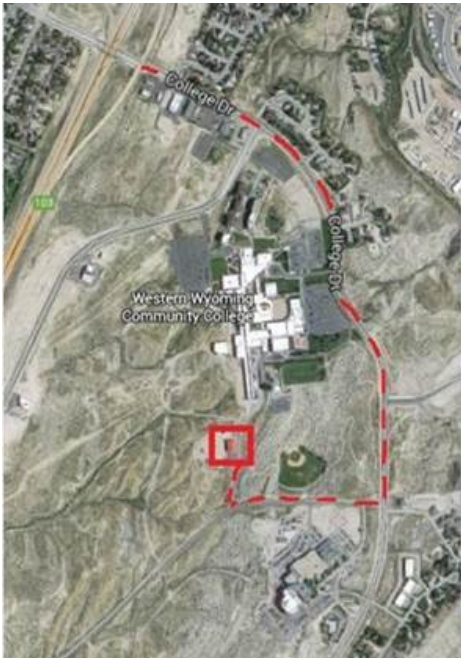
Workforce

- [Safety Classes](#)
- [MSHA Classes](#)
- [Medical Classes](#)
- [Mobile Equipment Operations](#)
- [Computer Workshops](#)



Driving Directions To W3TC

Take exit 103 "College Drive" off of I-80; go south on College Drive past the "Main Entrance" of the college and toward the hospital; just prior to the hospital turn right (west) onto skyline Drive. The W3TC building is about 1/4-mile on the right side.





Driver/sales workers and truck drivers had the most fatalities of any broad occupation group at 966. Among all detailed occupations, heavy and tractor-trailer truck drivers had the most fatalities at 831.

Want to learn more about us?

Western is an award-winning college in both our on-campus and distance learning programs. We believe our students come first, and your success is our #1 priority. Our motto says it best: “Enter with passion, leave with purpose”. Let us help you on your path to success!

[Request Information](#)

[Apply to Western](#)

[Contact Us](#)




Main Campus Off Campus Employment
Consumer Information



[I AM](#) ▼ [FAQ](#) [TOUR](#) [ABOUT](#) [MY WESTERN](#) [APPLY](#)

[Academics](#) [Admissions & Aid](#) [Student Life](#) [Calendars](#)

 2019 western wyoming community college.
Mustang Athletics 🔍
Western Wyoming Community College does not discriminate on the basis of race, color, nation origin, marital status, sexual preference, sex, age, religion, political belief, disability, or veteran status, in employment, admission and/or access to program or activities.